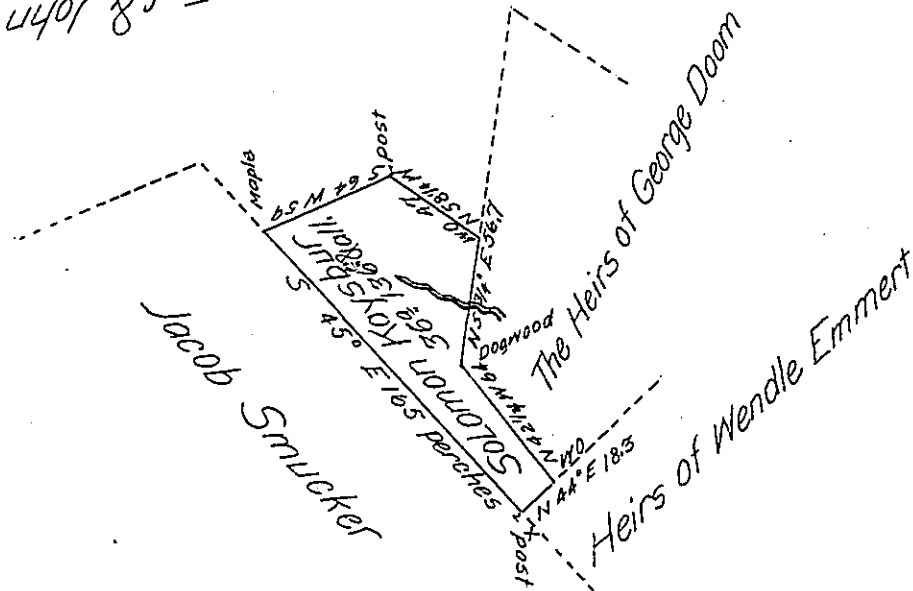


James Wells Esq & John Wells



Note there happens to be a Small Excess in the Bounds intended for this warrant the Owner therefore prays the Accourance as there is no more unappropriated Land Adjoining the same.
 John McClean
 To S.C.E.S.G.

Situate on the Waters of Beaver Dam Run a Branch of Stony Creek in Somerset Township Somerset County and Surveyed the 9th Day of May 1807. In Pursuance of a Warrant Dated the 12th Day of December 1806.

P^r John McClean Deputy

To Samuel Cochran Esquire }
 Surveyor General }

IN TESTIMONY that the above is a copy of the original remaining on file in the Department of Internal Affairs of Pennsylvania, made conformably to an Act of Assembly approved the 16th day of February, 1833, I have hereunto set my Hand and caused the Seal of said Department to be affixed at Harrisburg, this first day of July 1905

Samuel D. Brown
 Secretary of Internal Affairs.